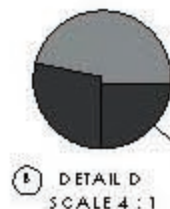
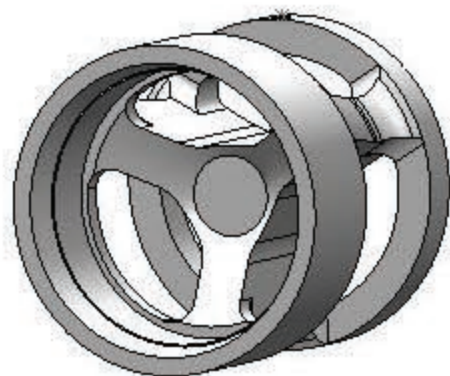
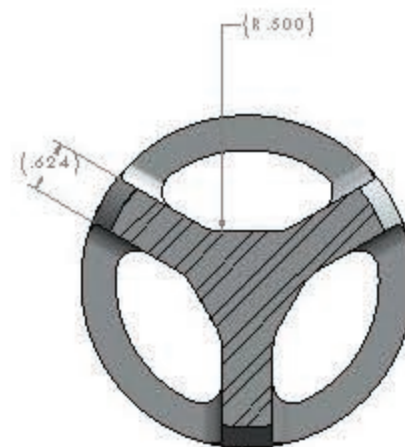
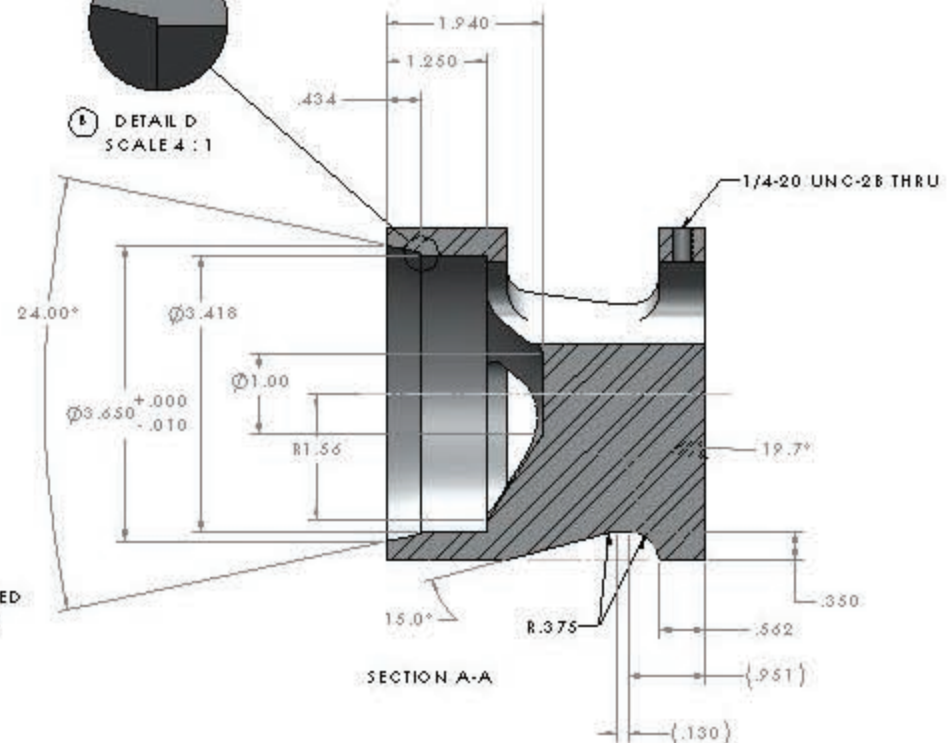


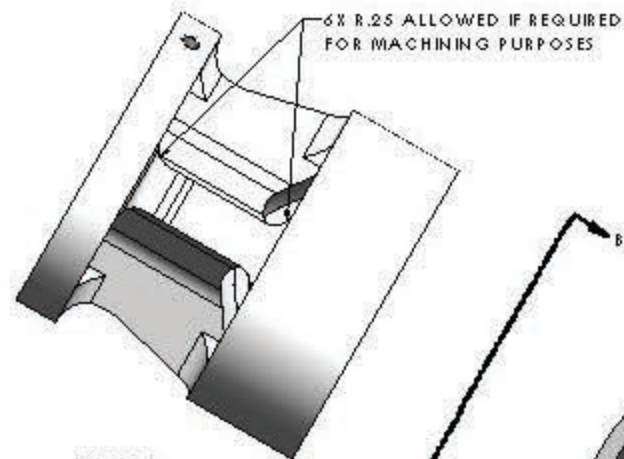
REV	BY	DESCRIPTION	DATE	APPROVED
1		Ø4.105-.005 WAS Ø4.125 ADDED VIEW B-B WITH OPTIONAL .25 RADIUS ADDED DETAIL D.	02/02/07	M. D. H.



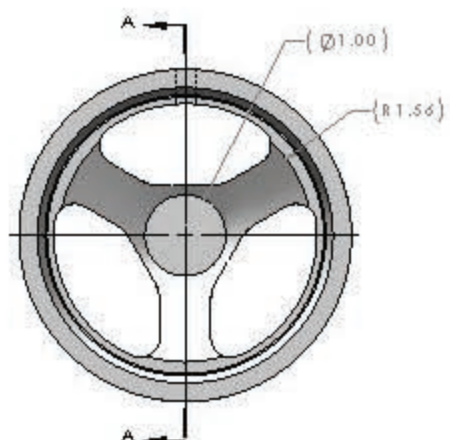
DETAIL D
SCALE 4:1



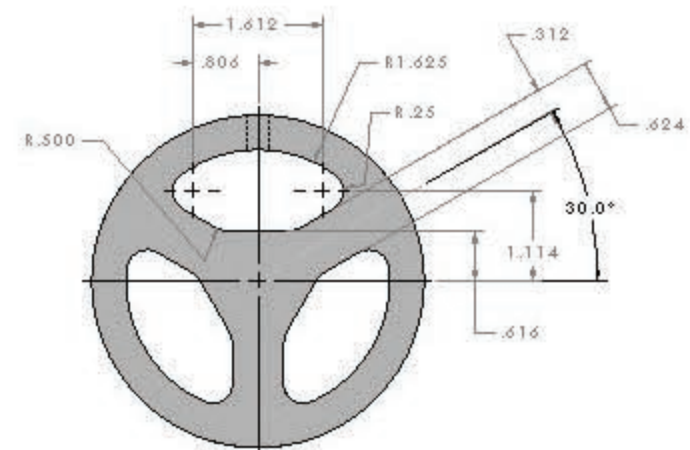
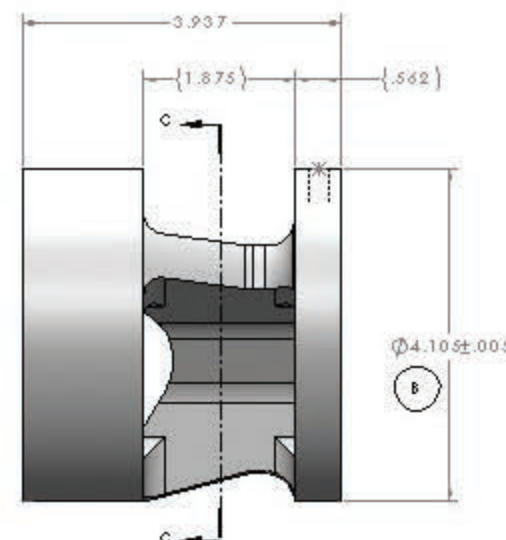
SECTION C-C



VIEW B-B



D



- 3. ALL SURFACE FINISHES 125RMS OR BETTER.
 - 2. MATERIAL: TYPE 440-C STAINLESS STEEL HOT ROLLED ANNEALED BAR.
 - 1. DEBURR AND REMOVE ALL SHARP EDGES, EXCEPT AS NOTED.
- UNLESS OTHERWISE SPECIFIED ---

PRECISION EQUIPMENT, INC. VALVE CHAIR		DATE: 02/02/07 DRAWN BY: M. D. H. CHECKED BY: M. D. H. APPROVED BY: M. D. H.
SHEET NO. 1 OF 1	PART NO. 2516	REV. B